

A47 Wansford to Sutton Dualling

Scheme Number: TR010039

Volume 6 **6.8 Environmental Masterplan**

APFP Regulation 5(2)(a)

Planning Act 2008

Infrastructure Planning (Applications: Prescribed
Forms and Procedure) Regulations 2009

April 2022

Deadline 5

Infrastructure Planning

Planning Act 2008

**The Infrastructure Planning
(Applications: Prescribed Forms and
Procedure) Regulations 2009**

A47 Wansford to Sutton
Development Consent Order 202[x]

6.8 ENVIRONMENTAL MASTERPLAN

| | |
|---|---|
| Regulation Number: | Regulation 5(2)(a) |
| Planning Inspectorate Scheme Reference | TR010039 |
| Application Document Reference | TR010039/APP/6.8 |
| Author: | A47 Wansford to Sutton Project Team, National Highways |

| Version | Date | Status of Version |
|----------------|-------------|-------------------------------|
| Rev 0 | July 2021 | Application Issue |
| Rev 1 | August 2021 | Updated following PINS Advice |
| Rev 2 | April 2022 | Deadline 5 |

SCHEDULE OF PLANS INCLUDED IN THIS APPLICATION DOCUMENT

| Drawing Title | Drawing number |
|---|----------------------------------|
| Environmental Masterplan (DCO) – Key Plan | HE551494-GTY-ELS-000-DR-LE-33008 |
| Environmental Masterplan (DCO) – Plant Schedule | HE551494-GTY-ELS-000-DR-LE-32009 |
| Environmental Masterplan (DCO) – Sheet 1 | HE551494-GTY-ELS-000-DR-LE-33001 |
| Environmental Masterplan (DCO) – Sheet 2 | HE551494-GTY-ELS-000-DR-LE-33002 |
| Environmental Masterplan (DCO) – Sheet 3 | HE551494-GTY-ELS-000-DR-LE-33003 |
| Environmental Masterplan (DCO) – Sheet 4 | HE551494-GTY-ELS-000-DR-LE-33004 |
| Environmental Masterplan (DCO) – Sheet 5 | HE551494-GTY-ELS-000-DR-LE-33005 |
| Environmental Masterplan (DCO) – Sheet 6 | HE551494-GTY-ELS-000-DR-LE-33006 |
| Environmental Masterplan (DCO) – Sheet 7 | HE551494-GTY-ELS-000-DR-LE-33007 |

NOTES

Purpose of use

FOR DCO SUBMISSION

Development Consent Order Number / Document

TR010039/APP/2.4

1. THESE PLANS SHOULD BE READ IN CONJUNCTION WITH OTHER PLANS AND DOCUMENTS IN THE DEVELOPMENT CONSENT ORDER.
2. ALL DIMENSIONS ARE IN METRES UNLESS STATED OTHERWISE.

KEY TO SYMBOLS

ORDER LIMITS

| | | | | | |
|--|--|--|--|--|--|
| | | | | | |
| | | | | | |
| | | | | | |
| | | | | | |
| | | | | | |
| | | | | | |
| | | | | | |
| | | | | | |
| | | | | | |

| | | | | | |
|-----|----------|---------------|-----|-------|-------|
| P01 | 04/08/21 | FOR ISSUE | LS | PBl | BJon |
| REV | DATE | REVISION NOTE | ORG | CHK'D | APP'D |

DESIGNER



CONTRACTOR



CLIENT



PROJECT TITLE

A47 WANSFORD TO SUTTON DUALLING

PROJECT STAGE

PCF STAGE 3

DRAWING TITLE

**ENVIRONMENTAL MASTERPLAN
KEY PLAN**

SUITABILITY

SUITABLE FOR STAGE APPROVAL

| | | | |
|------------|------------|-----------|------------|
| SHEET SIZE | SCALE | STATUS | REVISION |
| A1 | N/A | S4 | P01 |

DRAWING NUMBER

HE551494-GTY-ELS-000-DR-LE-33008



| LE 1.3 Species Rich Grassland | | |
|--------------------------------|----------------------------|----------|
| Germinal WFG4 Neutral soils | | |
| Sowing rate: 5g/m ² | | |
| Species | Common Name | % of mix |
| Achillea millefolium | Yarrow | 1 |
| Centaurea nigra | Common knapweed | 1 |
| Cynosurus cristatus | Crested dogstail | 20 |
| Festuca arundinacea | Tall fescue | 10 |
| Festuca rubra litoralis | Sleder creeping red fescue | 25 |
| Festuca rubra rubra | Strong creeping red fescue | 20 |
| Galium verum | Lady's bedstraw | 1.2 |
| Geranium molle | Doves foot cranesbill | 0.3 |
| Leucanthemum vulgare | oxeye daisy | 1.5 |
| Linum usitatissimum | Flax | 1.4 |
| Lotus corniculatus | Leo birdsfotts trefoil | 0.5 |
| Lychnis flos cuculi | Ragged robin | 0.1 |
| Medicago lupulina | Black medick | 1 |
| Onobrychis vicifolia | Sainfoin | 5 |
| Phleum bertolonii | Teno | 5 |
| Plantago lanceolata | Ribwort plantain | 2.4 |
| Prunella vulgaris | Self heal | 1 |
| Rhinanthus minor | Yellow rattle | 0.8 |
| Sanguisorba minor | Salad burnet | 1.8 |
| Scabiosa columbaria | Small scabious | 0.3 |
| Silene latifolia | White campion | 0.5 |
| Vicia sativa | Common vetch | 0.2 |

| LE 2.1 Woodland | | |
|--|-----------------|----------|
| Areas to comprise of LE1.3 species rich grassland | | |
| Supply size 75% 1+1 450-600mm high transplants | | |
| Plant Spacing Transplants at 2m centres | | |
| Plant Grouping Transplants in single species groups of 5-7 | | |
| Species | Common Name | % of mix |
| Acer campestre | Field maple | 5 |
| Betula pendula | Silver birch | 10 |
| Cornus sanguinea | Dogwood | 5 |
| Corylus avellana | Hazel | 20 |
| Crataegus monogyna | Hawthorn | 5 |
| Hedera helix | Ivy | 2.5 |
| Ilex aquifolium | Holly | 5 |
| Ligustrum vulgare | Wild privet | 5 |
| Pinus sylvestris | Scots pine | 7.5 |
| Prunus avium | Wild Cherry | 2.5 |
| Prunus spinosa | Blackthorn | 10 |
| Quercus robur | Pedunculate oak | 20 |
| Rubus fruticosus | Blackberry | 2.5 |

| LE 2.5 Shrubs with Intermittent Trees | | |
|--|-------------|----------|
| Shrubs with LE5.1 individual trees; to be planted in naturalistic groups | | |
| Supply size 1+1 450-600mm high transplants | | |
| Trees: 8-10cm girth standards and 12-14cm girth heavy standard trees | | |
| Plant spacing Plant in groups at 1.5m centres | | |
| Plant grouping Plant all species in single species of 3-5 | | |
| Species | Common Name | % of mix |
| Crataegus monogyna | Hawthorn | 30 |
| Prunus spinosa | Blackthorn | 7.5 |
| Sambucus nigra | Elder | 7.5 |
| Rosa canina | Dog rose | 15 |
| Rubus fruticosus | Bramble | 5 |
| Cornus sanguinea | Dogwood | 15 |
| Corylus avellana | Hazel | 20 |

| LE 4.3 Native Species Hedgerow | | |
|--|-------------|----------|
| Supply size 1+1 450-600mm high transplants | | |
| Plant Spacing Plant at 0.25m centres in double staggered rows (0.3m offset between rows) | | |
| Plant Grouping Plant all species in single species groups of 5-7 | | |
| Species | Common Name | % of mix |
| Acer campestre | Field maple | 10 |
| Cornus sanguinea | Dogwood | 5 |
| Corylus avellana | Hazel | 25 |
| Crataegus monogyna | Hawthorn | 30 |
| Hedera helix | Ivy | 2 |
| Ilex aquifolium | Holly | 10 |
| Prunus spinosa | Blackthorn | 5 |
| Rosa avensis | Field rose | 5 |
| Rosa canina | Dog rose | 5 |
| Sambucus nigra | Elder | 3 |

| LE 4.4 Native Species Hedgerow with Trees | | |
|---|-------------|----------|
| Planted with LE5.1 individual trees; to be planted as mix of 6-8cm girth light standards in naturalistic groups as per drawing, spacing no less than 5m. | | |
| Supply size 1+1 450-600mm high transplants (<i>Acer campestre</i> , <i>Cornus sanguinea</i> , <i>Corylus avellana</i> , <i>Crataegus monogyna</i> , <i>Prunus spinosa</i> , <i>Rosa avensis</i> , <i>Rosa canina</i> , <i>Sambucus nigra</i>) | | |
| 2L pots (<i>Hedera helix</i> , <i>Ilex aquifolium</i>) | | |
| Plant Spacing Plant at 0.25m centres in double staggered rows (0.3m offset between rows) | | |
| Plant Grouping Plant all species in single species groups of 5-7 | | |
| Species | Common Name | % of mix |
| Acer campestre | Field maple | 10 |
| Cornus sanguinea | Dogwood | 5 |
| Corylus avellana | Hazel | 30 |
| Crataegus monogyna | Hawthorn | 25 |
| Hedera helix | Ivy | 2 |
| Ilex aquifolium | Holly | 10 |
| Prunus spinosa | Blackthorn | 5 |
| Rosa avensis | Field rose | 5 |
| Rosa canina | Dog rose | 5 |
| Sambucus nigra | Elder | 3 |

| LE 5.1 Individual Trees | | |
|---|-------------------|----------|
| Supply size Mix of 6-8cm girth light standard trees | | |
| Species | Common Name | % of mix |
| Acer campestre | Field maple | |
| Acer pseudoplatanus | Sycamore | |
| Malus sylvestris | Common crab apple | |
| Pinus sylvestris | Scots pine | |
| Prunus avium | Wild cherry | |
| Quercus robur | Pedunculate oak | |
| Salix alba | White willow | |

| LE 6.2 Banks and Ditches (Riparian Seed Mix) | | |
|--|-------------------------------|----------|
| Emorsgate EP1 Pond Edge mixture (2.5m wide drainage ditch and attenuation basin) | | |
| Sowing rate: 4g/m ² | | |
| Species | Common Name | % of mix |
| Wildflowers (20%) | | |
| Achillea ptarmica | Sneezewort | 1 |
| Angelica sylvestris | Wild angelica | 2.3 |
| Caltha palustris | Marsh marigold | 0.1 |
| Eupatorium cannabinum | Hemp agrimony | 0.6 |
| Filipendula ulmaria | Meadowsweet | 3 |
| Geum rivale | Water avens | 1 |
| Hypericum tetrapterum | Square-stalked st john's wort | 0.4 |
| Iris pseudacorus | Yellow Iris | 4 |
| Lotus pedunculatus | Greater birdsfoot trefoil | 1 |
| Lycopus europaeus | Gypsywort | 0.8 |
| Lythrum salicaria | Purple loosestrife | 0.6 |
| Mentha aquatica | Water mint | 0.1 |
| Pulicaria dysenterica | Common fleabane | 0.1 |
| Ranunculus acris | Meadow buttercup | 2.5 |
| Scrophularia auriculata | Water figwort | 0.1 |
| Silene flos-cuculi | Ragged robin | 1 |
| Succisa pratensis | Devil's-bit scabious | 1 |
| Vicia cracca | Tufted vetch | 0.4 |
| Grasses (80%) | | |
| Agrostis capillaris | Common bent | 10 |
| Alopecurus pratensis | Meadow foxtail | 3 |
| Anthoxanthum odoratum | Sweet vernal-grass | 3 |
| Cynosurus cristatus | Crested dogstail | 32 |
| Dechampsia cespitosa | Tufted hair-grass | 1 |
| Festuca rubra | slender-creeping red-fescue | 24 |
| Hordeum secalinum | Meadow barley | 1 |
| Schedonorus pratensis | Meadow fescue | 6 |

| LE 6.4 Marsh and Wet Grassland | | |
|---|-------------------------------|----------|
| Riparian seed mix and plug plants | | |
| Riparian Seed Mix Emorsgate EP1 Pond Edge mixture | | |
| Sowing rate: 4g/m ² | | |
| Species | Common Name | % of mix |
| Wildflowers (20%) | | |
| Achillea ptarmica | Sneezewort | 1 |
| Angelica sylvestris | Wild angelica | 2.3 |
| Caltha palustris | Marsh marigold | 0.1 |
| Eupatorium cannabinum | Hemp agrimony | 0.6 |
| Filipendula ulmaria | Meadowsweet | 3 |
| Geum rivale | Water avens | 1 |
| Hypericum tetrapterum | Square-stalked st john's wort | 0.4 |
| Iris pseudacorus | Yellow Iris | 4 |
| Lotus pedunculatus | Greater birdsfoot trefoil | 1 |
| Lycopus europaeus | Gypsywort | 0.8 |
| Lythrum salicaria | Purple loosestrife | 0.6 |
| Mentha aquatica | Water mint | 0.1 |
| Pulicaria dysenterica | Common fleabane | 0.1 |
| Ranunculus acris | Meadow buttercup | 2.5 |
| Scrophularia auriculata | Water figwort | 0.1 |
| Silene flos-cuculi | Ragged robin | 1 |
| Succisa pratensis | Devil's-bit scabious | 1 |
| Vicia cracca | Tufted vetch | 0.4 |
| Grasses (80%) | | |
| Agrostis capillaris | Common bent | 10 |
| Alopecurus pratensis | Meadow foxtail | 3 |
| Anthoxanthum odoratum | Sweet vernal-grass | 3 |
| Cynosurus cristatus | Crested dogstail | 32 |
| Dechampsia cespitosa | Tufted hair-grass | 1 |
| Festuca rubra | slender-creeping red-fescue | 24 |
| Hordeum secalinum | Meadow barley | 1 |
| Schedonorus pratensis | Meadow fescue | 6 |
| Riparian Plug Plants | | |
| Plants to be notch planted in single species swaths at 0.5m centres | | |
| 7cm pot | | |
| Species | Common Name | % of mix |
| Alisma plantago-aquatica | Water plantain | 6.25 |
| Butomus umbellatus | Flowering rush | 6.25 |
| Carex elata | Tufted sedge | 6.25 |
| Glyceria maxima | Reed sweet-grass | 6.25 |
| Iris pseudacorus | Yellow flag iris | 6.25 |
| Myosotis scorpioides | Water forget-me-not | 6.25 |
| Veronica beccabunga | Brooklime | 6.25 |
| Stachys palustris | Marsh woundwort | 6.25 |
| Caltha palustris | Marsh-marigold | 6.25 |
| Eupatorium cannabinum | Hemp agrimony | 6.25 |
| Allium ursinum | Wild garlic | 6.25 |
| Persicaria bistorta | Common bistort | 6.25 |
| Mentha aquatica | Water mint | 6.25 |
| Ranunculus acris | Meadow buttercup | 6.25 |
| Geum rivale | Water avens | 6.25 |
| Carex riparia | Greater pond sedge | 6.25 |

NOTES

Purpose of use

FOR DCO SUBMISSION

Development Consent Order Number / Document

TR010039/APP/2.4

- THESE PLANS SHOULD BE READ IN CONJUNCTION WITH OTHER PLANS AND DOCUMENTS IN THE DEVELOPMENT CONSENT ORDER.
- ALL DIMENSIONS ARE IN METRES UNLESS STATED OTHERWISE.

KEY TO SYMBOLS

| | | | | | |
|-----|----------|----------------------|-----|------|------|
| P01 | 09/06/21 | For review & comment | LS | JMee | BJon |
| REV | DATE | REVISION NOTE | ORG | CHKD | APPD |

DESIGNER



CONTRACTOR



CLIENT



PROJECT TITLE

A47 WANSFORD TO SUTTON DUALLING

PROJECT STAGE

PCF STAGE 3

DRAWING TITLE

ENVIRONMENTAL MASTERPLAN
INDICATIVE PLANT SCHEDULE

SUITABILITY

SUITABLE FOR REVIEW & COMMENT

| | | | |
|------------|-------|--------|----------|
| SHEET SIZE | SCALE | STATUS | REVISION |
| A1 | N/A | S3 | P01 |

DRAWING NUMBER

HE551494-GTY-ELS-000-DR-LE-32009



NOTES

Purpose of use
FOR DCO SUBMISSION

Development Consent Order Number / Document
TR010039/APP/2.13

SHEET PLAN
SHEETS 1 - 7 (INCLUDES INSET A).

1. THESE PLANS SHOULD BE READ IN CONJUNCTION WITH OTHER PLANS AND DOCUMENTS IN THE DEVELOPMENT CONSENT ORDER.
2. ALL DIMENSIONS ARE IN METRES UNLESS STATED OTHERWISE.
3. ONLY HEDGES WITHIN THE ORDER LIMITS ARE DISPLAYED ON THIS DRAWING SET.

KEY TO SYMBOLS

| | |
|---|---|
| ORDER LIMITS | LE6.2 BANKS AND DITCHES |
| EXISTING VEGETATION TO BE RETAINED | LE6.4 MARSH AND WET GRASSLAND |
| EXISTING POND TO BE RETAINED | PROPOSED ENVIRONMENTAL ELEMENTS |
| EXISTING FENCE TO BE RETAINED | E2.1 ATTENUATION/FILTRATION BASINS |
| EXISTING PARAPET TO BE RETAINED | E3.2.1 ENVIRONMENTAL FENCING |
| EXISTING LIGHTING COLUMN TO BE RETAINED | E3.2.3 PROPOSED PERMANENT WATER IN WILDLIFE PONDS AND DITCH |
| PROPOSED LANDSCAPE ELEMENTS | PROPOSED ELEMENTS - OTHER |
| LE1.3 SPECIES RICH GRASSLAND | AGRICULTURAL LAND RESTORED |
| LE2.1 WOODLAND | HIGHWAYS FENCE (INDICATIVE) |
| LE2.5 SHRUBS WITH INTERMITTENT TREES | ANTI-GLARE FENCE (INDICATIVE) |
| LE4.3 NATIVE SPECIES HEDGEROWS | PARAPET (INDICATIVE) |
| LE4.4 NATIVE HEDGEROWS WITH TREES | LIGHTING COLUMN (INDICATIVE) |
| LE5.1 INDIVIDUAL TREES | |

| | | | | | |
|-----|----------|---------------|-----|------|------|
| P01 | 04/08/21 | FOR ISSUE | LS | PBla | BJon |
| REV | DATE | REVISION NOTE | ORG | CHKD | APPD |

DESIGNER

CONTRACTOR

CLIENT

PROJECT TITLE
A47 WANSFORD TO SUTTON DUALLING

PROJECT STAGE
PCF STAGE 3

DRAWING TITLE
ENVIRONMENTAL MASTERPLAN SHEET 1 OF 7

SUITABILITY
SUITABLE FOR STAGE APPROVAL

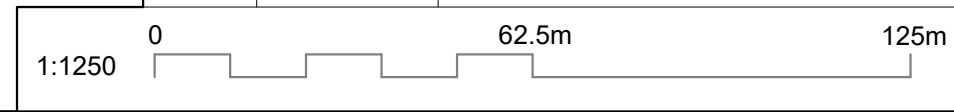
| | | | |
|---|------------------------|---------------------|------------------------|
| SHEET SIZE A1 | SCALE 1:1250 | STATUS S4 | REVISION P01 |
| DRAWING NUMBER HE551494-GTY-ELS-000-DR-LE-33001 | | | |

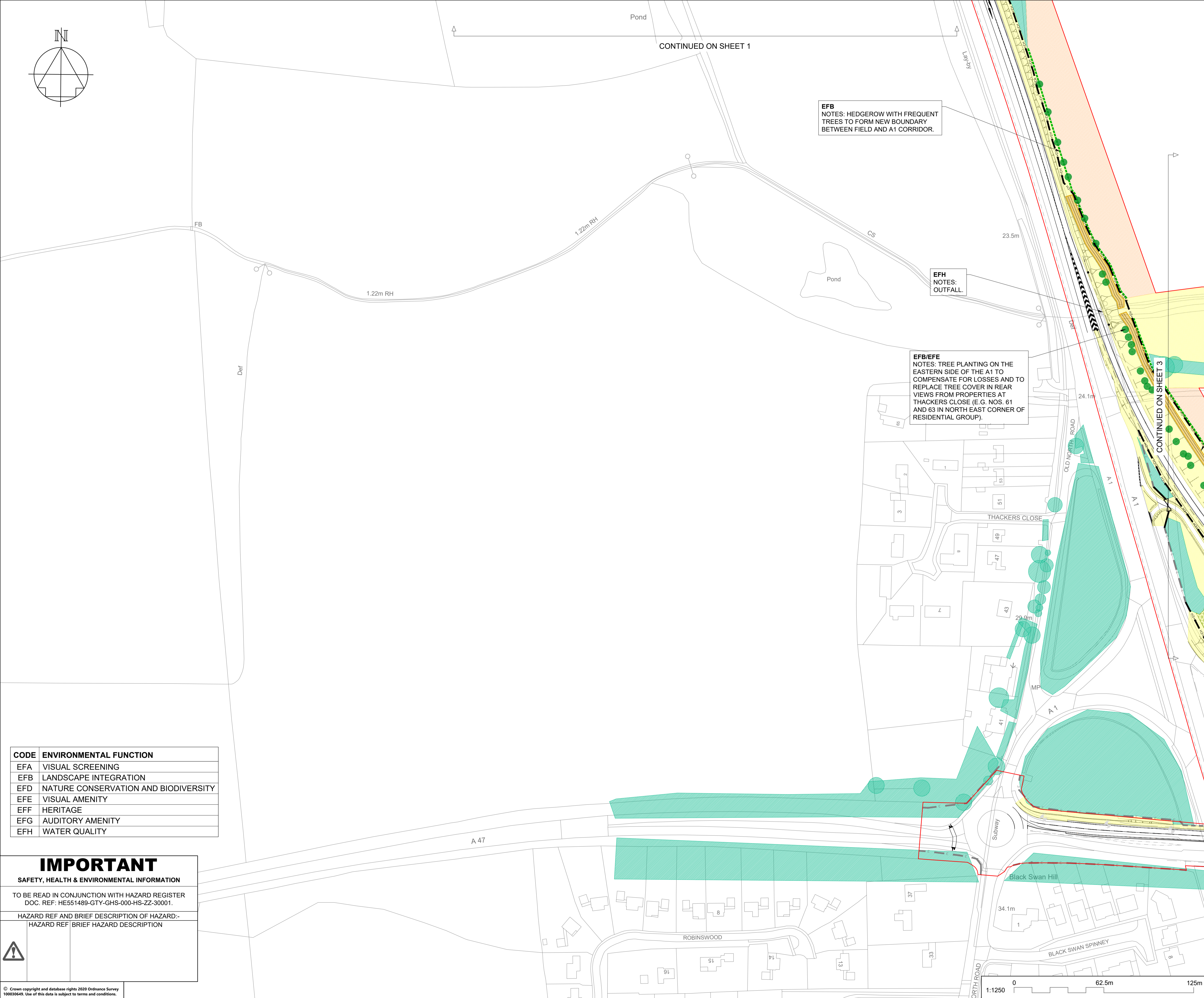
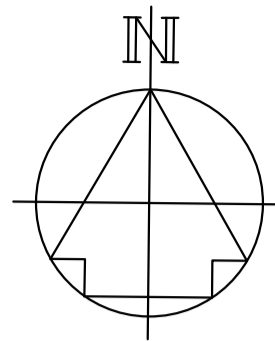
| CODE | ENVIRONMENTAL FUNCTION |
|------|--------------------------------------|
| EFA | VISUAL SCREENING |
| EFB | LANDSCAPE INTEGRATION |
| EFD | NATURE CONSERVATION AND BIODIVERSITY |
| EFE | VISUAL AMENITY |
| EFF | HERITAGE |
| EFG | AUDITORY AMENITY |
| EFH | WATER QUALITY |

IMPORTANT
SAFETY, HEALTH & ENVIRONMENTAL INFORMATION

TO BE READ IN CONJUNCTION WITH HAZARD REGISTER
DOC. REF: HE551489-GTY-GHS-000-HS-ZZ-30001.

| HAZARD REF | BRIEF DESCRIPTION OF HAZARD |
|------------|-----------------------------|
| HAZARD REF | BRIEF HAZARD DESCRIPTION |



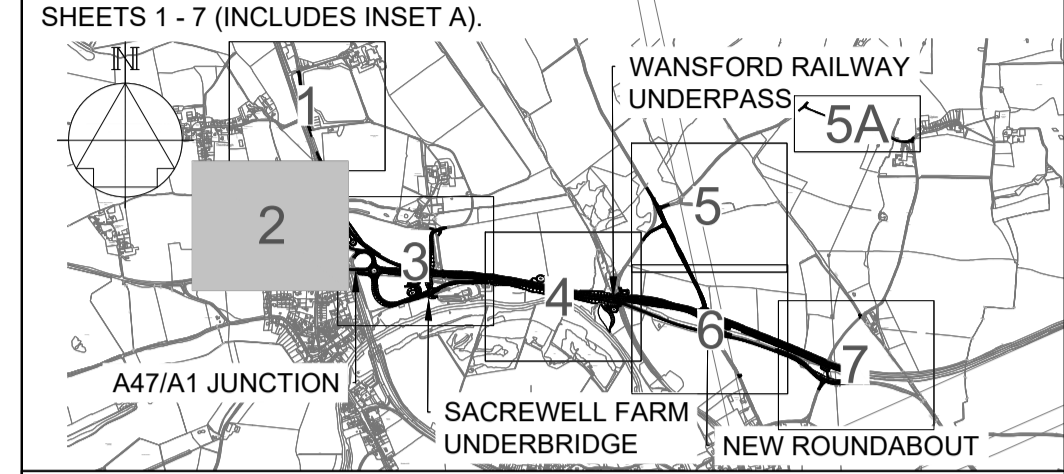


NOTES

Purpose of use
FOR DCO SUBMISSION

Development Consent Order Number / Document
TR010039/APP/2.13

SHEET PLAN
SHEETS 1 - 7 (INCLUDES INSET A).



- THESE PLANS SHOULD BE READ IN CONJUNCTION WITH OTHER PLANS AND DOCUMENTS IN THE DEVELOPMENT CONSENT ORDER.
- ALL DIMENSIONS ARE IN METRES UNLESS STATED OTHERWISE.
- ONLY HEDGES WITHIN THE ORDER LIMITS ARE DISPLAYED ON THIS DRAWING SET.

KEY TO SYMBOLS

| | |
|---|---|
| ORDER LIMITS | LE6.2 BANKS AND DITCHES |
| EXISTING VEGETATION TO BE RETAINED | LE6.4 MARSH AND WET GRASSLAND |
| EXISTING POND TO BE RETAINED | PROPOSED ENVIRONMENTAL ELEMENTS |
| EXISTING FENCE TO BE RETAINED | E2.1 ATTENUATION/INFILTRATION BASINS |
| EXISTING PARAPET TO BE RETAINED | E3.2.1 ENVIRONMENTAL FENCING |
| EXISTING LIGHTING COLUMN TO BE RETAINED | E3.2.3 PROPOSED PERMANENT WATER IN WILDLIFE PONDS AND DITCH |
| PROPOSED LANDSCAPE ELEMENTS | PROPOSED ELEMENTS - OTHER |
| LE1.3 SPECIES RICH GRASSLAND | AGRICULTURAL LAND RESTORED |
| LE2.1 WOODLAND | HIGHWAYS FENCE (INDICATIVE) |
| LE2.5 SHRUBS WITH INTERMITTENT TREES | ANTIGLARE FENCE (INDICATIVE) |
| LE4.3 NATIVE SPECIES HEDGEROWS | PARAPET (INDICATIVE) |
| LE4.4 NATIVE HEDGEROWS WITH TREES | LIGHTING COLUMN (INDICATIVE) |
| LE5.1 INDIVIDUAL TREES | |

| | | | | | |
|-----|----------|---------------|-----|------|------|
| REV | DATE | REVISION NOTE | ORG | CHKD | APPD |
| P01 | 04/08/21 | FOR ISSUE | LS | PBla | BJon |

DESIGNER
SWECO

CONTRACTOR
GallifordTry

CLIENT
highways england

PROJECT TITLE
A47 WANSFORD TO SUTTON DUALLING

PROJECT STAGE
PCF STAGE 3

DRAWING TITLE
ENVIRONMENTAL MASTERPLAN SHEET 2 OF 7

SUITABILITY
SUITABLE FOR STAGE APPROVAL

| | | | |
|------------|--------|--------|----------|
| SHEET SIZE | SCALE | STATUS | REVISION |
| A1 | 1:1250 | S4 | P01 |

DRAWING NUMBER
HE551494-GTY-ELS-000-DR-LE-33002

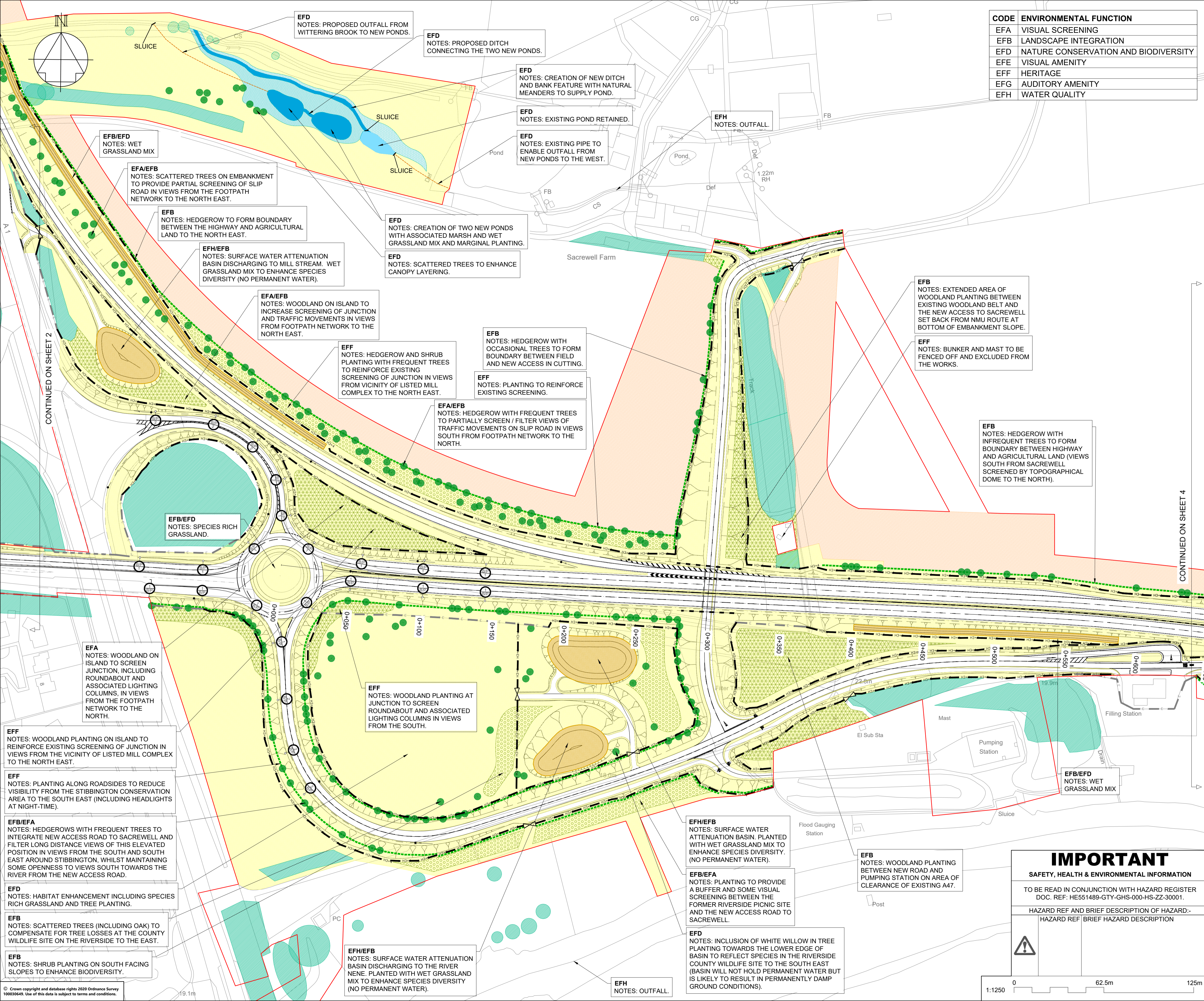
| CODE | ENVIRONMENTAL FUNCTION |
|------|--------------------------------------|
| EFA | VISUAL SCREENING |
| EFB | LANDSCAPE INTEGRATION |
| EFD | NATURE CONSERVATION AND BIODIVERSITY |
| EFE | VISUAL AMENITY |
| EFF | HERITAGE |
| EFG | AUDITORY AMENITY |
| EFH | WATER QUALITY |

IMPORTANT
SAFETY, HEALTH & ENVIRONMENTAL INFORMATION

TO BE READ IN CONJUNCTION WITH HAZARD REGISTER
DOC. REF: HE551489-GTY-GHS-000-HS-ZZ-30001.

| HAZARD REF | BRIEF DESCRIPTION OF HAZARD:- |
|------------|-------------------------------|
| HAZARD REF | BRIEF HAZARD DESCRIPTION |

This drawing should not be relied on or used in circumstances other than those for which it was originally prepared and for which Sweco UK Ltd was commissioned. Sweco UK Ltd accepts no responsibility for this drawing to any party other than the person by whom it was commissioned. This drawing has been prepared on behalf of Galliford Try by Sweco UK Ltd for the stated project or named part thereof and should not be relied upon or used for any other project without an independent check being carried out as to its suitability and prior written authority of Galliford Try being obtained. Sweco UK Ltd accepts no responsibility or liability for the consequences of this drawing being used for a purpose other than the purposes for which it was commissioned. Any person using or relying on this drawing for such other purpose agrees, and will by such use or reliance be taken to confirm his/her agreement, to indemnify Sweco UK Ltd for all loss or damage resulting therefrom.



| CODE | ENVIRONMENTAL FUNCTION |
|------|--------------------------------------|
| EFA | VISUAL SCREENING |
| EFB | LANDSCAPE INTEGRATION |
| EFD | NATURE CONSERVATION AND BIODIVERSITY |
| EFE | VISUAL AMENITY |
| EFF | HERITAGE |
| EFG | AUDITORY AMENITY |
| EFH | WATER QUALITY |

NOTES
Purpose of use

FOR DCO SUBMISSION

Development Consent Order Number / Document
TR010039/APP/2.13

SHEET PLAN
SHEETS 1 - 7 (INCLUDES INSET A).

1. THESE PLANS SHOULD BE READ IN CONJUNCTION WITH OTHER PLANS AND DOCUMENTS IN THE DEVELOPMENT CONSENT ORDER.
2. ALL DIMENSIONS ARE IN METRES UNLESS STATED OTHERWISE.
3. ONLY HEDGES WITHIN THE ORDER LIMITS ARE DISPLAYED ON THIS DRAWING SET.

KEY TO SYMBOLS

| | | |
|---|---------------------------------------|---|
| ORDER LIMITS | LE.2 WOODLAND | LE.6.2 MARSH AND WET GRASSLAND |
| EXISTING VEGETATION TO BE RETAINED | LE.2.5 SHRUBS WITH INTERMITTENT TREES | E2.1 ATTENUATION/INFILTRATION BASINS |
| EXISTING POND TO BE RETAINED | LE.4.3 NATIVE SPECIES HEDGEROWS | E3.2.3 PROPOSED PERMANENT WATER IN WILDLIFE PONDS AND DITCH |
| EXISTING FENCE TO BE RETAINED | LE.4.4 NATIVE HEDGEROWS WITH TREES | PROPOSED ELEMENTS - OTHER |
| EXISTING PARAPET TO BE RETAINED | LE.5.1 INDIVIDUAL TREES | AGRICULTURAL LAND RESTORED |
| EXISTING LIGHTING COLUMN TO BE RETAINED | | HIGHWAYS FENCE (INDICATIVE) |
| LE.1.3 SPECIES RICH GRASSLAND | | ANTIGLARE FENCE (INDICATIVE) |
| LE.2.1 WOODLAND | | PARAPET (INDICATIVE) |
| LE.2.5 SHRUBS WITH INTERMITTENT TREES | | LIGHTING COLUMN (INDICATIVE) |
| LE.4.3 NATIVE SPECIES HEDGEROWS | | |
| LE.4.4 NATIVE HEDGEROWS WITH TREES | | |
| LE.5.1 INDIVIDUAL TREES | | |

| REV | DATE | REVISION NOTE | ORG | CHKD | APPD |
|-----|----------|---------------|-----|------|------|
| P01 | 04/08/21 | FOR ISSUE | LS | PBla | BJon |

DESIGNER

SWECO

CONTRACTOR

GallifordTry

CLIENT

highways england

PROJECT TITLE

A47 WANSFORD TO SUTTON DUALLING

PROJECT STAGE

PCF STAGE 3

DRAWING TITLE

ENVIRONMENTAL MASTERPLAN SHEET 3 OF 7

SUITABILITY

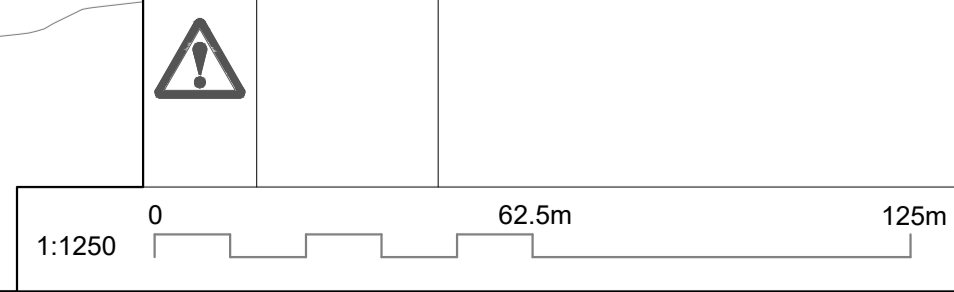
SUITABLE FOR STAGE APPROVAL

| SHEET SIZE | SCALE | STATUS | REVISION |
|------------|--------|--------|----------|
| A1 | 1:1250 | S4 | P01 |

DRAWING NUMBER

HE551494-GTY-ELS-000-DR-LE-33003

IMPORTANT
SAFETY, HEALTH & ENVIRONMENTAL INFORMATION
TO BE READ IN CONJUNCTION WITH HAZARD REGISTER DOC. REF: HE551489-GTY-GHS-000-HS-ZZ-30001.
HAZARD REF AND BRIEF DESCRIPTION OF HAZARD:-
HAZARD REF: BRIEF HAZARD DESCRIPTION



© Crown copyright and database rights 2020 Ordnance Survey 10003645. Use of this data is subject to terms and conditions.

This drawing should not be relied on or used in circumstances other than those for which it was originally prepared and for which Sweco UK Ltd was commissioned. Sweco UK Ltd accepts no responsibility for this drawing to any party other than the person by whom it was commissioned. This drawing has been prepared on behalf of Galliford Try by Sweco UK Ltd for the titled project or named part thereof and should not be relied upon or used for any other project without an independent check being carried out as to its suitability and prior written authority of Galliford Try being obtained. Sweco UK Ltd accepts no responsibility or liability for the consequences of this drawing being used for a purpose other than the purposes for which it was commissioned. Any person using or relying on this drawing for such other purpose agrees, and will by such use or reliance be taken to confirm his/her agreement, to indemnify Sweco UK Ltd for all loss or damage resulting therefrom.

NOTES

Purpose of use

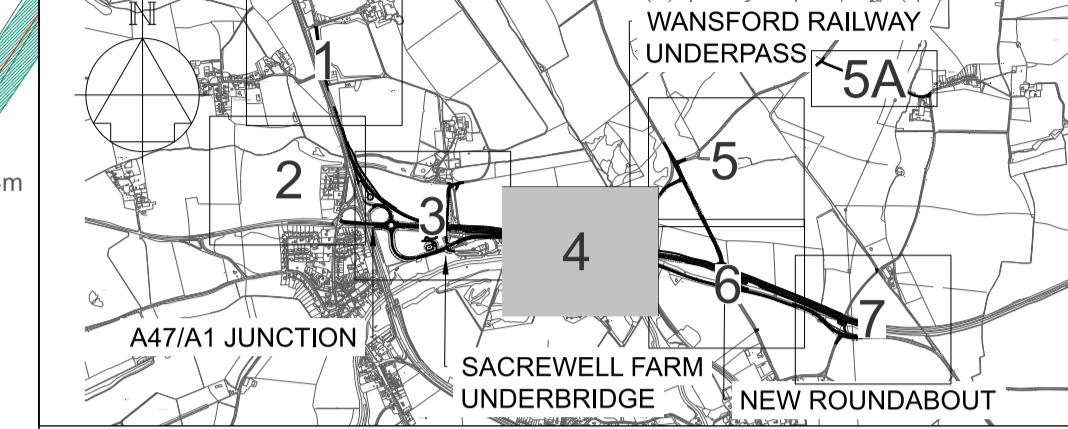
FOR DCO SUBMISSION

Development Consent Order Number / Document

TR010039/APP/2.13

SHEET PLAN

SHEETS 1 - 7 (INCLUDES INSET A).



1. THESE PLANS SHOULD BE READ IN CONJUNCTION WITH OTHER PLANS AND DOCUMENTS IN THE DEVELOPMENT CONSENT ORDER.
2. ALL DIMENSIONS ARE IN METRES UNLESS STATED OTHERWISE.
3. ONLY HEDGES WITHIN THE ORDER LIMITS ARE DISPLAYED ON THIS DRAWING SET.

KEY TO SYMBOLS

| | | |
|---|---------------------------------------|---|
| ORDER LIMITS | LE.2.1 SPECIES RICH GRASSLAND | LE.6.2 BANKS AND DITCHES |
| EXISTING VEGETATION TO BE RETAINED | LE.2.2 WOODLAND | LE.6.4 MARSH AND WET GRASSLAND |
| EXISTING POND TO BE RETAINED | LE.2.5 SHRUBS WITH INTERMITTENT TREES | E2.1 ATTENUATION/INFILTRATION BASINS |
| EXISTING FENCE TO BE RETAINED | LE.4.3 NATIVE SPECIES HEDGEROWS | E3.2.1 ENVIRONMENTAL FENCING |
| EXISTING PARAPET TO BE RETAINED | LE.4.4 NATIVE HEDGEROWS WITH TREES | E3.2.3 PROPOSED PERMANENT WATER IN WILDLIFE PONDS AND DITCH |
| EXISTING LIGHTING COLUMN TO BE RETAINED | LE.5.1 INDIVIDUAL TREES | PROPOSED ELEMENTS - OTHER |
| PROPOSED LANDSCAPE ELEMENTS | | AGRICULTURAL LAND RESTORED |
| | | HIGHWAYS FENCE (INDICATIVE) |
| | | ANTIGLARE FENCE (INDICATIVE) |
| | | PARAPET (INDICATIVE) |
| | | LIGHTING COLUMN (INDICATIVE) |

| | | | | | |
|-----|----------|---------------|------|------|------|
| P01 | 04/08/21 | FOR ISSUE | LS | PBla | BJon |
| P02 | 14/04/22 | DEADLINE 5 | MHus | PBla | MMur |
| REV | DATE | REVISION NOTE | ORG | CHKD | APPD |

DESIGNER

CONTRACTOR

CLIENT

PROJECT TITLE
A47 WANSFORD TO SUTTON DUALLING

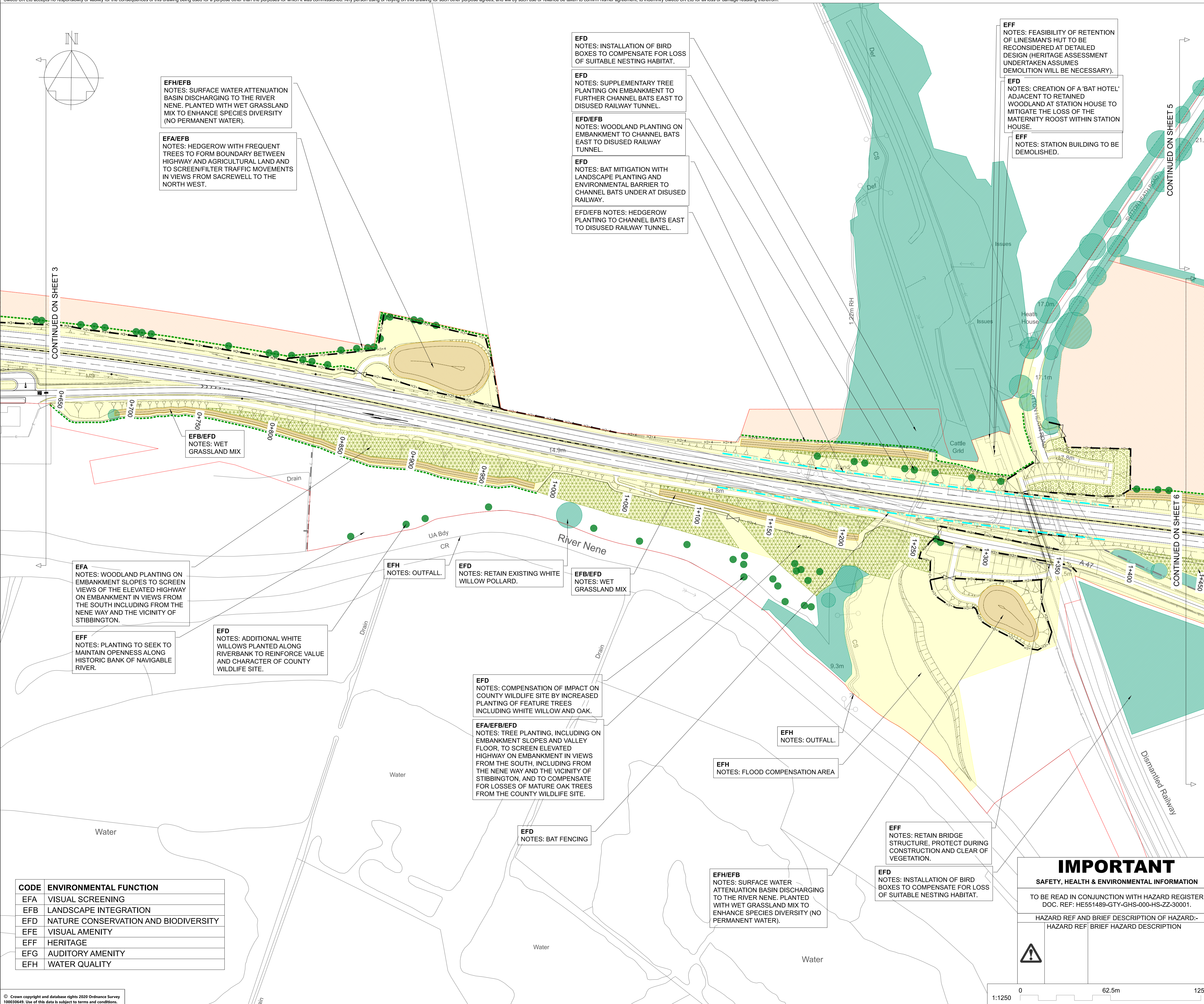
PROJECT STAGE
PCF STAGE 4

DRAWING TITLE
ENVIRONMENTAL MASTERPLAN SHEET 4 OF 7

SUITABILITY
SUITABLE FOR STAGE APPROVAL

| | | | |
|------------|--------|--------|----------|
| SHEET SIZE | SCALE | STATUS | REVISION |
| A1 | 1:1250 | S4 | P02 |

DRAWING NUMBER
HE551494-GTY-ELS-000-DR-LE-33004

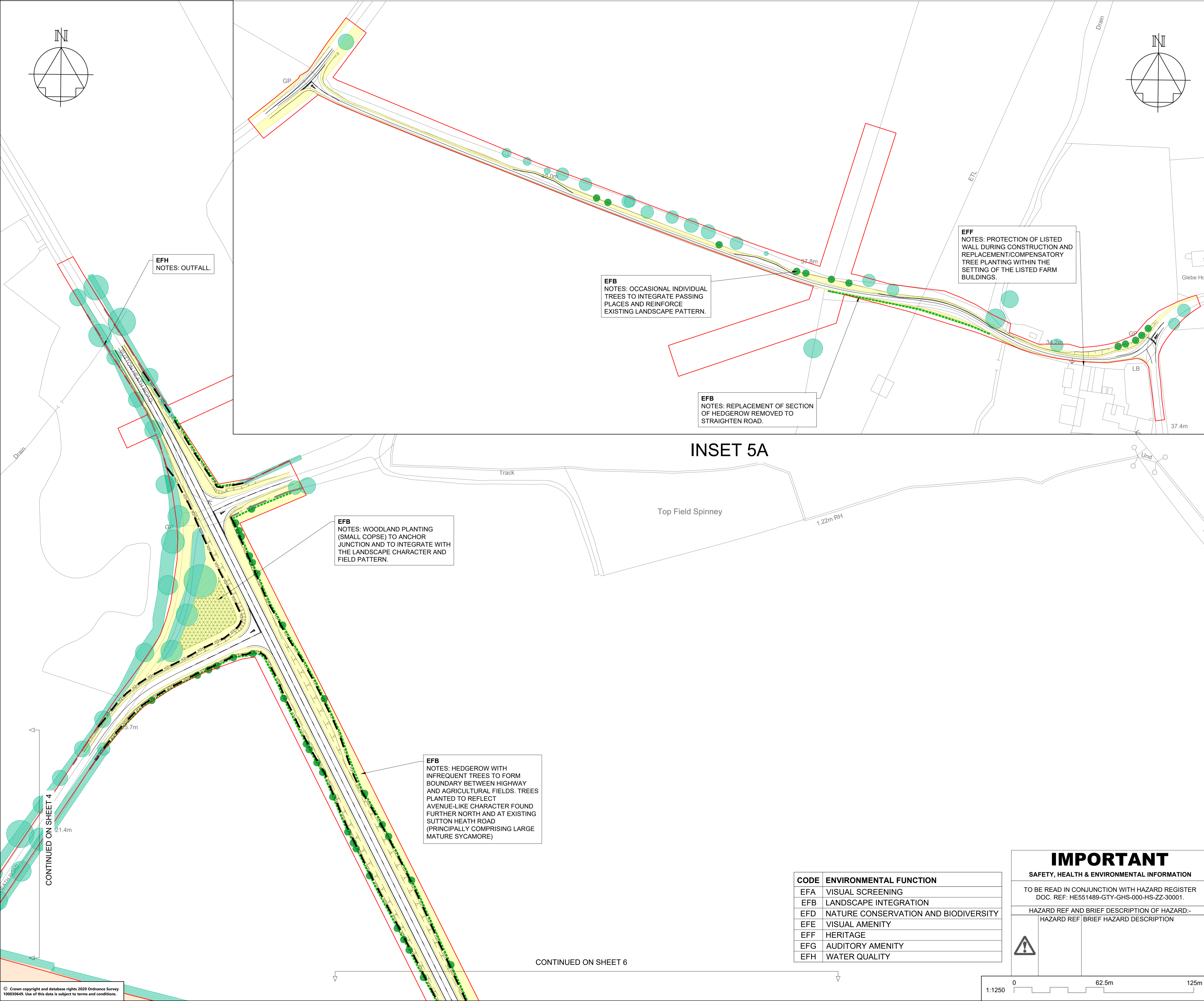


| CODE | ENVIRONMENTAL FUNCTION |
|------|--------------------------------------|
| EFA | VISUAL SCREENING |
| EFB | LANDSCAPE INTEGRATION |
| EFD | NATURE CONSERVATION AND BIODIVERSITY |
| EFE | VISUAL AMENITY |
| EFF | HERITAGE |
| EFG | AUDITORY AMENITY |
| EFH | WATER QUALITY |

© Crown copyright and database rights 2020 Ordnance Survey 100030649. Use of this data is subject to terms and conditions.

IMPORTANT
SAFETY, HEALTH & ENVIRONMENTAL INFORMATION
TO BE READ IN CONJUNCTION WITH HAZARD REGISTER DOC. REF: HE551489-GTY-GHS-000-HS-ZZ-30001.
HAZARD REF AND BRIEF DESCRIPTION OF HAZARD:-
HAZARD REF BRIEF HAZARD DESCRIPTION

0 62.5m 125m
1:1250



NOTES
Purpose of use
FOR DCO SUBMISSION

Development Consent Order Number / Document
TR010039/APP/2.13

SHEET PLAN
SHEETS 1 - 7 (INCLUDES INSET A).

1. THESE PLANS SHOULD BE READ IN CONJUNCTION WITH OTHER PLANS AND DOCUMENTS IN THE DEVELOPMENT CONSENT ORDER.
2. ALL DIMENSIONS ARE IN METRES UNLESS STATED OTHERWISE.
3. ONLY HEDGES WITHIN THE ORDER LIMITS ARE DISPLAYED ON THIS DRAWING SET.

KEY TO SYMBOLS

| | |
|---|---|
| ORDER LIMITS | LE6.2 BANKS AND DITCHES |
| EXISTING VEGETATION TO BE RETAINED | PROPOSED ENVIRONMENTAL ELEMENTS |
| EXISTING POND TO BE RETAINED | E2.1 ATTENUATION/INFILTRATION BASINS |
| EXISTING FENCE TO BE RETAINED | E3.2.1 ENVIRONMENTAL FENCING |
| EXISTING PARAPET TO BE RETAINED | E3.2.3 PROPOSED PERMANENT WATER IN WILDLIFE PONDS AND DITCH |
| EXISTING LIGHTING COLUMN TO BE RETAINED | PROPOSED ELEMENTS - OTHER |
| PROPOSED LANDSCAPE ELEMENTS | AGRICULTURAL LAND RESTORED |
| LE1.3 SPECIES RICH GRASSLAND | HIGHWAYS FENCE (INDICATIVE) |
| LE2.1 WOODLAND | ANTIGLARE FENCE (INDICATIVE) |
| LE2.5 SHRUBS WITH INTERMITTENT TREES | PARAPET (INDICATIVE) |
| LE4.3 NATIVE SPECIES HEDGEROWS | LIGHTING COLUMN (INDICATIVE) |
| LE4.3 NATIVE SPECIES HEDGEROWS WITH TREES | |
| LE5.1 INDIVIDUAL TREES | |

| | | | | | |
|-----|----------|---------------|-----|------|------|
| P01 | 04/08/21 | FOR ISSUE | LS | Pbla | BJon |
| REV | DATE | REVISION NOTE | ORG | CHKD | APPD |

DESIGNER
SWECO

CONTRACTOR
GallifordTry

CLIENT
highways england

PROJECT TITLE
A47 WANSFORD TO SUTTON DUALLING

PROJECT STAGE
PCF STAGE 3

DRAWING TITLE
ENVIRONMENTAL MASTERPLAN SHEET 5 OF 7

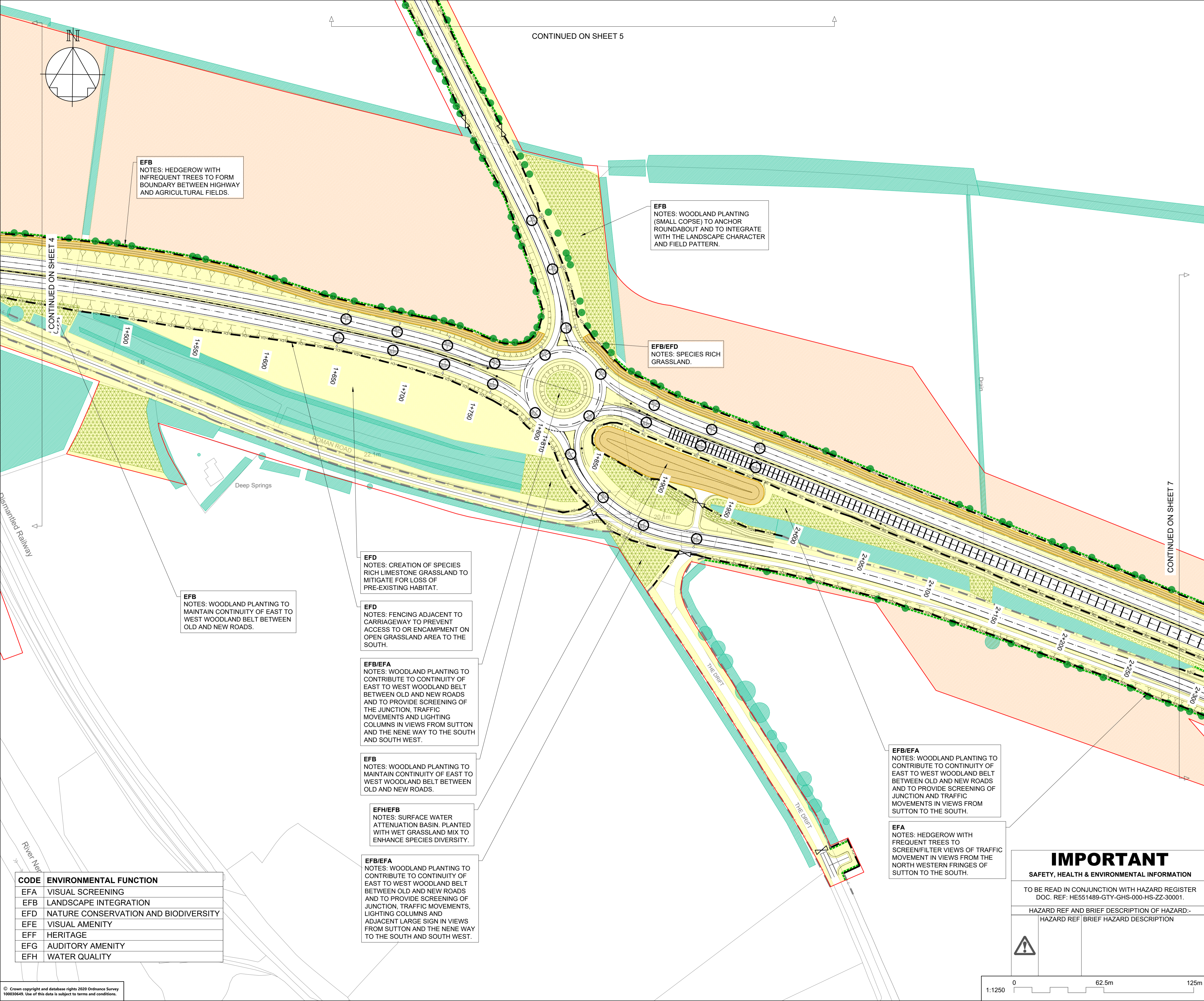
SUITABILITY
SUITABLE FOR STAGE APPROVAL

| | | | |
|---|------------------------|---------------------|------------------------|
| SHEET SIZE A1 | SCALE 1:1250 | STATUS S4 | REVISION P01 |
| DRAWING NUMBER HE551494-GTY-ELS-000-DR-LE-33005 | | | |

| CODE | ENVIRONMENTAL FUNCTION |
|------|--------------------------------------|
| EFA | VISUAL SCREENING |
| EFB | LANDSCAPE INTEGRATION |
| EFD | NATURE CONSERVATION AND BIODIVERSITY |
| EFE | VISUAL AMENITY |
| EFF | HERITAGE |
| EFG | AUDITORY AMENITY |
| EFH | WATER QUALITY |

IMPORTANT
SAFETY, HEALTH & ENVIRONMENTAL INFORMATION
TO BE READ IN CONJUNCTION WITH HAZARD REGISTER DOC. REF: HE551489-GTY-GHS-000-HS-ZZ-30001.
HAZARD REF AND BRIEF DESCRIPTION OF HAZARD:
HAZARD REF | BRIEF HAZARD DESCRIPTION

1:1250 0 62.5m 125m



NOTES
Purpose of use
FOR DCO SUBMISSION
Development Consent Order Number / Document
TR010039/APP/2.13
SHEET PLAN
SHEETS 1 - 7 (INCLUDES INSET A).
WANSFORD RAILWAY UNDERPASS 5A
A47/A1 JUNCTION SACREWELL FARM UNDERBRIDGE NEW ROUNDABOUT

1. THESE PLANS SHOULD BE READ IN CONJUNCTION WITH OTHER PLANS AND DOCUMENTS IN THE DEVELOPMENT CONSENT ORDER.
2. ALL DIMENSIONS ARE IN METRES UNLESS STATED OTHERWISE.
3. ONLY HEDGES WITHIN THE ORDER LIMITS ARE DISPLAYED ON THIS DRAWING SET.

KEY TO SYMBOLS

| | |
|---|---|
| ORDER LIMITS | LE6.2 BANKS AND DITCHES |
| EXISTING VEGETATION TO BE RETAINED | PROPOSED ENVIRONMENTAL ELEMENTS |
| EXISTING POND TO BE RETAINED | E2.1 ATTENUATION/FILTRATION BASINS |
| EXISTING FENCE TO BE RETAINED | E3.2.1 ENVIRONMENTAL FENCING |
| EXISTING PARAPET TO BE RETAINED | E3.2.3 PROPOSED PERMANENT WATER IN WILDLIFE PONDS AND DITCH |
| EXISTING LIGHTING COLUMN TO BE RETAINED | PROPOSED ELEMENTS - OTHER |
| PROPOSED LANDSCAPE ELEMENTS | AGRICULTURAL LAND RESTORED |
| LE1.3 SPECIES RICH GRASSLAND | HIGHWAYS FENCE (INDICATIVE) |
| LE2.1 WOODLAND | ANTIGLARE FENCE (INDICATIVE) |
| LE2.5 SHRUBS WITH INTERMITTENT TREES | PARAPET (INDICATIVE) |
| LE4.3 NATIVE SPECIES HEDGEROWS | LIGHTING COLUMN (INDICATIVE) |
| LE4.4 NATIVE HEDGEROWS WITH TREES | |
| LE5.1 INDIVIDUAL TREES | |

| | | | | | |
|-----|----------|---------------|-----|------|------|
| P01 | 04/08/21 | FOR ISSUE | LS | PBla | BJon |
| REV | DATE | REVISION NOTE | ORG | CHKD | APPD |

DESIGNER
SWECO

CONTRACTOR
GallifordTry

CLIENT
highways england

PROJECT TITLE
A47 WANSFORD TO SUTTON DUALLING

PROJECT STAGE
PCF STAGE 3

DRAWING TITLE
ENVIRONMENTAL MASTERPLAN SHEET 6 OF 7

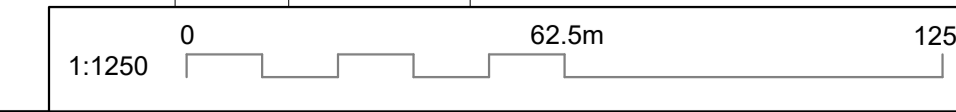
SUITABILITY
SUITABLE FOR STAGE APPROVAL

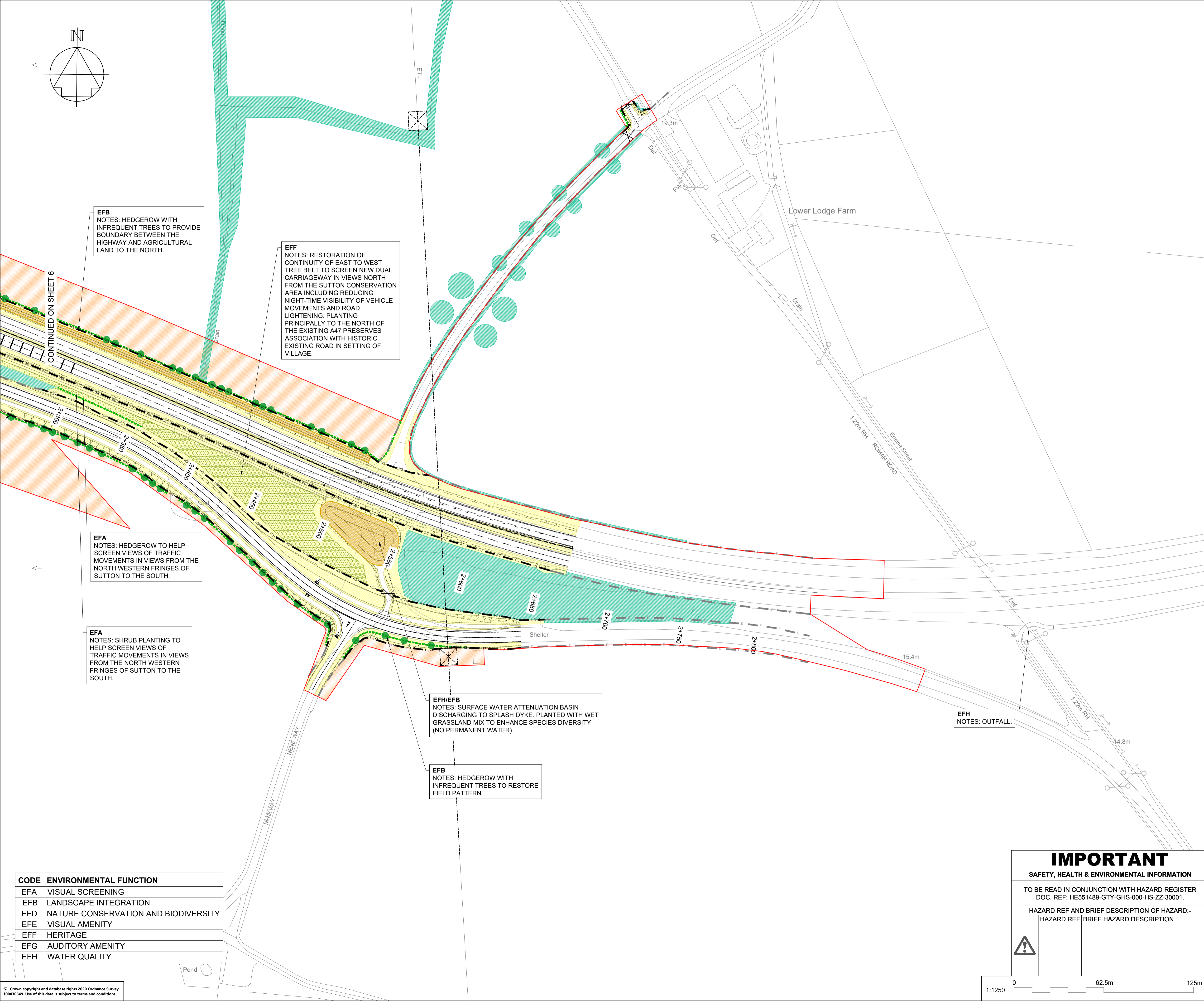
| | | | |
|------------|--------|--------|----------|
| SHEET SIZE | SCALE | STATUS | REVISION |
| A1 | 1:1250 | S4 | P01 |

DRAWING NUMBER
HE551494-GTY-ELS-000-DR-LE-33006

| CODE | ENVIRONMENTAL FUNCTION |
|------|--------------------------------------|
| EFA | VISUAL SCREENING |
| EFB | LANDSCAPE INTEGRATION |
| EFD | NATURE CONSERVATION AND BIODIVERSITY |
| EFE | VISUAL AMENITY |
| EFF | HERITAGE |
| EFG | AUDITORY AMENITY |
| EFH | WATER QUALITY |

IMPORTANT
SAFETY, HEALTH & ENVIRONMENTAL INFORMATION
TO BE READ IN CONJUNCTION WITH HAZARD REGISTER DOC. REF: HE551489-GTY-GHS-000-HS-ZZ-30001.
HAZARD REF AND BRIEF DESCRIPTION OF HAZARD:-
HAZARD REF | BRIEF HAZARD DESCRIPTION





NOTES

Purpose of use
FOR DCO SUBMISSION

Development Consent Order Number / Document
TR010039/APP/2.13

SHEET PLAN
 SHEETS 1 - 7 (INCLUDES INSET A).

1. THESE PLANS SHOULD BE READ IN CONJUNCTION WITH OTHER PLANS AND DOCUMENTS IN THE DEVELOPMENT CONSENT ORDER.
2. ALL DIMENSIONS ARE IN METRES UNLESS STATED OTHERWISE.
3. ONLY HEDGES WITHIN THE ORDER LIMITS ARE DISPLAYED ON THIS DRAWING SET.

KEY TO SYMBOLS

| | |
|---|---|
| ORDER LIMITS | LE6.2 BANKS AND DITCHES |
| EXISTING VEGETATION TO BE RETAINED | LE6.4 MARSH AND WET GRASSLAND |
| EXISTING POND TO BE RETAINED | PROPOSED ENVIRONMENTAL ELEMENTS |
| EXISTING FENCE TO BE RETAINED | E2.1 ATTENUATION/INFILTRATION BASINS |
| EXISTING PARAPET TO BE RETAINED | E3.2.1 ENVIRONMENTAL FENCING |
| EXISTING LIGHTING COLUMN TO BE RETAINED | E3.2.3 PROPOSED PERMANENT WATER IN WILDLIFE PONDS AND DITCH |
| PROPOSED LANDSCAPE ELEMENTS | PROPOSED ELEMENTS - OTHER |
| LE1.3 SPECIES RICH GRASSLAND | AGRICULTURAL LAND RESTORED |
| LE2.1 WOODLAND | HIGHWAYS FENCE (INDICATIVE) |
| LE2.5 SHRUBS WITH INTERMITTENT TREES | ANTIGLARE FENCE (INDICATIVE) |
| LE4.3 NATIVE SPECIES HEDGEROWS | PARAPET (INDICATIVE) |
| LE4.4 NATIVE HEDGEROWS WITH TREES | LIGHTING COLUMN (INDICATIVE) |
| LE5.1 INDIVIDUAL TREES | |

| | | | | | |
|--|--|--|--|--|--|
| | | | | | |
| | | | | | |
| | | | | | |
| | | | | | |
| | | | | | |
| | | | | | |
| | | | | | |
| | | | | | |
| | | | | | |
| | | | | | |

| | | | | | |
|-----|----------|---------------|-----|------|------|
| P01 | 04/08/21 | FOR ISSUE | LS | PBlA | BJon |
| REV | DATE | REVISION NOTE | ORG | CHKD | APPD |

DESIGNER

CONTRACTOR

CLIENT

PROJECT TITLE
A47 WANSFORD TO SUTTON DUALLING

PROJECT STAGE
PCF STAGE 3

DRAWING TITLE
ENVIRONMENTAL MASTERPLAN SHEET 7 OF 7

SUITABILITY
SUITABLE FOR STAGE APPROVAL

| | | | |
|------------|--------|--------|----------|
| SHEET SIZE | SCALE | STATUS | REVISION |
| A1 | 1:1250 | S4 | P01 |

DRAWING NUMBER
HE551494-GTY-ELS-000-DR-LE-33007

| CODE | ENVIRONMENTAL FUNCTION |
|------|--------------------------------------|
| EFA | VISUAL SCREENING |
| EFB | LANDSCAPE INTEGRATION |
| EFD | NATURE CONSERVATION AND BIODIVERSITY |
| EFE | VISUAL AMENITY |
| EFF | HERITAGE |
| EFG | AUDITORY AMENITY |
| EFH | WATER QUALITY |

IMPORTANT
SAFETY, HEALTH & ENVIRONMENTAL INFORMATION

TO BE READ IN CONJUNCTION WITH HAZARD REGISTER DOC. REF: HE551489-GTY-GHS-000-HS-ZZ-30001.

| HAZARD REF | BRIEF DESCRIPTION OF HAZARD:- |
|------------|-------------------------------|
| HAZARD REF | BRIEF HAZARD DESCRIPTION |

